

## Drawing Class - Homework Assignment

### POSITIVE & NEGATIVE SPACE DRAWING



Still Life Set Up Example

**Begin by watching the video link below:**

**Negative Space VIDEO LINK -**

<https://vimeo.com/405901766>

#### **Project Description:**

Set up a still life where you can see a good combination of positive and negative space. Measure and draw the still life, separating the positive and negative shapes. (use HB graphite) Once you have separated the positive and negative shapes, fill in the negative space with a sharpie marker.

#### **MATERIALS for the Drawing:**

1 Sheet of 18" x 24" white drawing paper, HB Graphite Pencil, Fine Point Black Sharpie Marker, "Chisel Tip" Black Sharpie Marker (you can also use black ink if you do not have the markers)



Step 1 : Linear Underdrawing



Finished Positive / Negative Space Project (with sharpie)

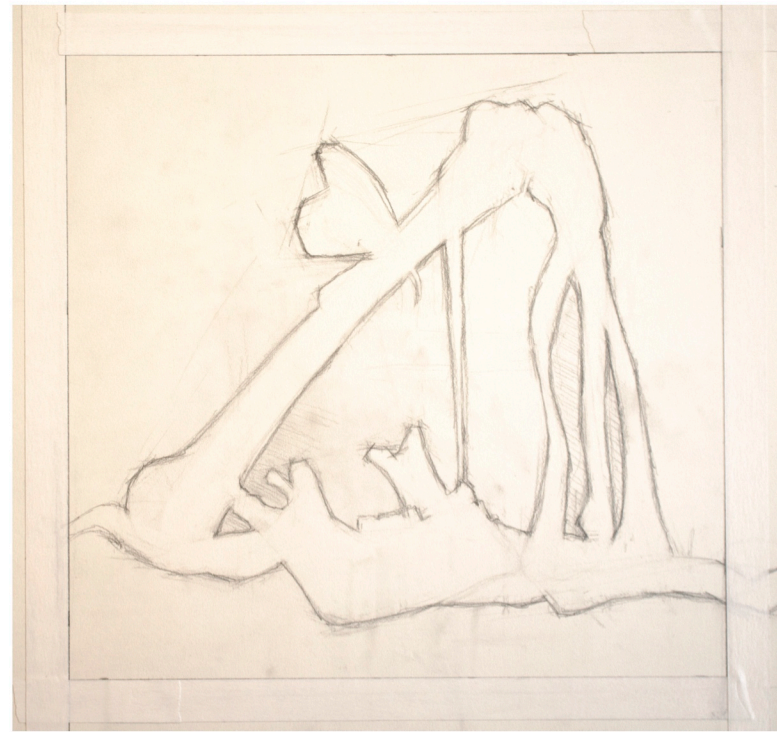


Positive / Negative Space Project Example





**Stage 1.** Graphite Underdrawing



**Stage 2.** Separation of Positive & Negative Space  
(artist tape around drawing) Erase any graphite lines within the positive shapes.



Still Life  
Set Up  
Example



**Stage 3.** Fill in the negative space with a black marker  
(Markers used in demo: fine point black sharpie, and a "Chisel Tip" Black Sharpie)

**Final Step:**  
Erase any graphite underdrawing lines.